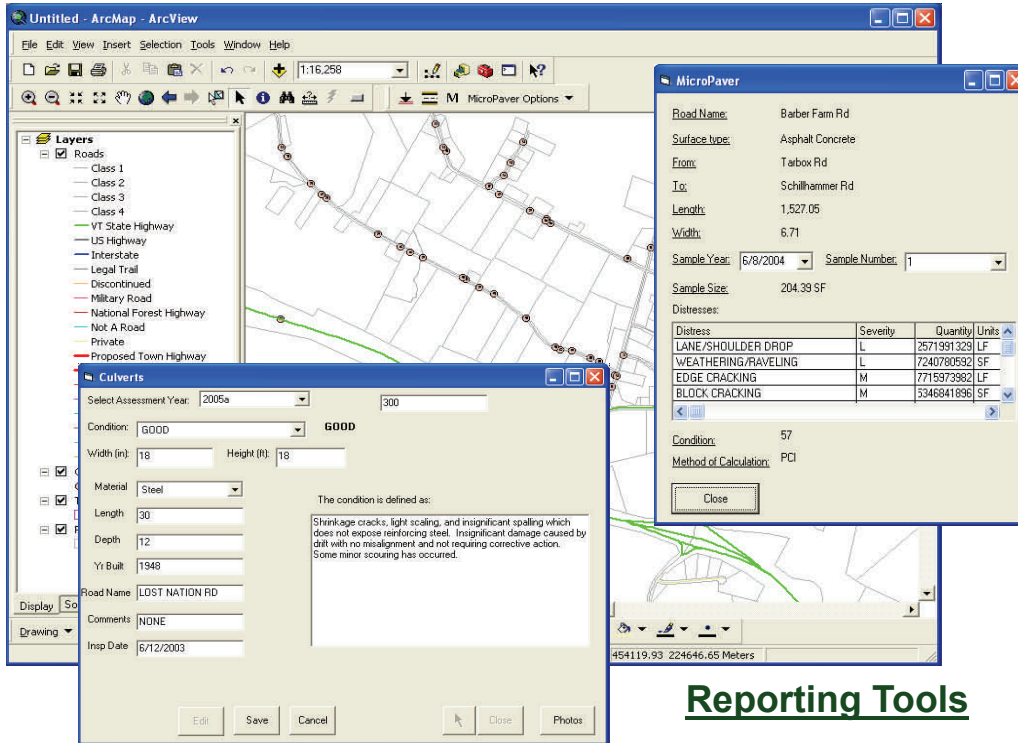


AssetGIS

For use with ArcGIS® 9.x



“IT IS A BIG CHALLENGE”
Government initiatives such as GASB-34 and EPA stormwater regulations are focused on ensuring that assets are being adequately managed. Your resources and time are limited and you don't want to invest in yet another software package that is complicated or expensive. IVS, a leader in providing solutions to municipal information needs, now offers AssetGIS. Our suite of tools gives you total control over your fixed assets at a dramatically lower cost than competitors.

Condition Assessment Tools

Once you have your inventories in AssetGIS, you can assign condition information. Your town is unique and AssetGIS allows you to customize how you assess the condition of your roadways, culverts, and other assets. You can also add repair cost information.

Our program maintains:

- Roads
- Bridges
- Culverts
- Signs

And many other assets within your municipality.

Reporting Tools

AssetGIS creates accurate complete reports on your fixed assets. Listings of assets, their condition, and repair costs can be printed directly or exported into a variety of formats such as Excel® or Access®. These reports are GASB-34 compliant and meet VTrans inventory requirements as well.

Some Town

Report Date: 3/25/2004

Survey year: 1997

Section	Length (feet)	Condition	From	To	Surface type	Data updated:
TH-1 Length (feet): 305.07						
Section: 001	Peaslt	Condition: very good	From: VT15 to CLAY HILL			
	Pavem ent width: 30	Surface type: Hard surface (pavement)				Data updated:
Section: 001	Clay Hill	Condition: very good	From: VT15 to CLAY HILL			
	Pavem ent width: 30	Surface type: Hard surface (pavement)				Data updated:
TH-1 Length (feet): 1813.93						
Section: 003	Plot Rd	Condition: excellent	From: CLAY HILL RD to FOOTE BROOK RD - 2			
	Pavem ent width: 24	Surface type: Gravel				Data updated:
Section: 003	Plot Rd	Condition: excellent	From: CLAY HILL RD to FOOTE BROOK RD - 2			
	Pavem ent width: 24	Surface type: Gravel				Data updated:
TH-1 Length (feet): 2134.43						
Section: 004	Plot Rd	Condition: excellent	From: FOOTE BROOK - 2 to FOOTE BROOK RD - 4			
	Pavem ent width: 24	Surface type: Gravel				Data updated:
TH-1 Length (feet): 2603.13						
Section: 005	Plot Rd	Condition: excellent	From: FOOTE BROOK - 4 to WATERVILLE T.L.			
	Pavem ent width: 22	Surface type: Gravel				Data updated:
Section: 005	Plot Rd	Condition: excellent	From: FOOTE BROOK - 4 to WATERVILLE T.L.			
	Pavem ent width: 22	Surface type: Gravel				Data updated:



INFORMATION &
VISUALIZATION
SERVICES

P.O. Box 4503
Burlington VT 05406-4503
ph (802) 865-0437
www.ivsgis.com

fax (802) 860-1014
info@ivsgis.com

HIGHLIGHTS

- Asset inventory and mapping
- Total control of your assessments
- Easy to implement and use
- Integrates with RSMS databases
- Compatible with MicroPAVER®
- Condition assessment
- Financial reporting
- Affordable cost
- GASB-34 & VTrans compliant
- User friendly mapping tools