

UtilityGIS

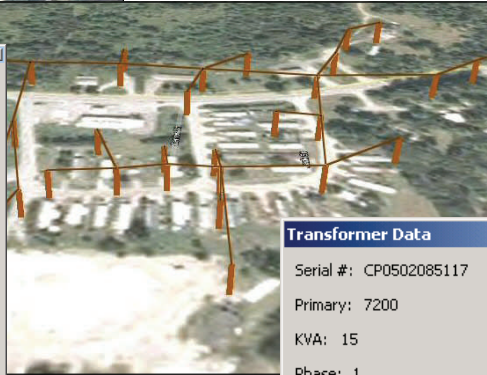
For use with ArcGIS® 9.x

Once your utility data has been captured in a GIS format, maintaining the data is key to taking full advantage of what a GIS can offer. With UtilityGIS you have the power to update and maintain your data from a simple yet extensive visual point-and-click interface, create customized maps of targeted areas or the entire network, and generate reports on your utility features. Our suite of tools gives you total control over your utility data at a dramatically lower cost than similar packages.

ArcGIS 2-D representation



Google Earth 3-D representation



Pole Information

Cross arm specific information: Top Middle Bottom
 Phase: CBA
 Arm length (ft.): 8
 Fuse:
 Conductor mtrl: ALUM
 Conductor size: 1/0
 Insulator: POLY

Transformer information: Trans 1 Trans 2 Trans 3
 Type: CON
 Number: 2315
 Size: 15
 Fuse: Y
 Phase: C
 Arrestor: Y

Tap information: Tap 1 Tap 2
 Phase:
 Type:
 Fuse:
 Insulator:

Guy information: Guy 1 Guy 2 Guy 3
 Type: DEAD EN
 Rod Size: 1
 Head: TRIPLE
 Wire Size: 3/8

Service cable information: SC 1 SC 2 SC 3 SC 4
 Type: OH
 Conductor: ALUM
 Material: QUAD
 Size: 1/0

Light information: Light 1 Light 2
 Type: OTHER
 Size:
 Arm length: 2

Length (ft.): 8 Phase: CBA
 Top cross arm:
 Middle cross arm:
 Bottom cross arm:
 Height (ft.): 45
 Type: SINGLE
 Date: 2004
 Attachments: T
 Downground: CU
 Verizon pole: 11
 Pole: 1631
 Class: 3
 Which side of road: Right
 Line number: 1204-1
 Jointly owned: T
 Substation: HIGHGATE
 Verizon line:
 GOAB:

Comments: TRANS4 CON 2198 15KVA Y 8 Y
 Location: N 44 56 9.89 W 73 3 30.27

Transformer Data

Serial #: CP0502085117 Make: COOPER
 Primary: 7200 Secondary: 277
 KVA: 15 Taps: Y
 Phase: 1 TD: 1
 Date Purchased: 6/13/200 Cost: \$445
 Pole: Cust:
 Location: CASELLA WASTE

Reporting Tools

UtilityGIS creates accurate complete reports on all of your utility infrastructure data. Listings of poles and any data which correlates to the pole number can be included. These reports can be printed directly or exported into a variety of formats such as Excel® or Access®. Reports are available for whatever data you have in your database - poles, lamps, transformers, etc.

Example Application

You receive a call from one of your customers stating the power is out. You can enter that customer's account number and/or phone number and instantly you have all other customers running off the same transformer alerting you to which neighborhoods are most likely affected by this power outage. You can quickly create a map of the area and locate the information about the faulty transformer and any other materials you may need before you are in the field.

POLES - Short Report

Town: Lyndonville

Pole No	End Pole	Pole Span	Line No	Pole Height	Pole Date	Const. Type	Attach	Owner	Trans No.	Lamp Type	No. of Guys	No. of Anchors
1/1	1/2	196.40	I0001	40	81	A5	T	JOWNED			3	3
1/1	13/1	77.18	I0001	40	81	D5	T	JOWNED			3	3
1/2	10/1	276.27	I0001	45	81	A2	T	JOWNED			2	2
1/2	1/3	218.47	I0001	45	81	A2	T	JOWNED			2	2
1/3	1/4	227.39	I0001	40	80	SC1	T	LED				
1/4	1/5	230.70	I0001	40	80	A2	T	JOWNED	1960	HPS	2	1



INFORMATION &
VISUALIZATION
SERVICES

P.O. Box 4503
 Burlington VT 05406-4503
 ph (802) 865-0437
 www.ivsgis.com

fax (802) 860-1014
 info@ivsgis.com

HIGHLIGHTS

- Customer database queries
- Simple point-and-click interface
- Customized reporting
- Export database to standard formats
- Integrates with other software
- Integrate existing spatial data
- Create maps as needed
- Affordable cost
- State-of-the-art technology
- Link all your databases